



# FEBRUARY 2008

## PENINSULA EQUINE SERVICES

# NEWSLETTER

JULIE A PAGE, DVM 253-858-4515 / 360-8761582

### THANK YOU

*Peninsula Equine Services would like to thank all our clients for your continued support and entrusting us for the care of your horse(s). Working together, it is our goal to ensure your horse lives a long and healthy life.*

### CHANGES IN SMARTPAK

SmartPak continues to be a very economical way for clients to order StrongidC2x for the PreventiCare Program. It is now required to use our Vet Code when ordering StrongidC to qualify for the PreventiCare Program. You can call the office at 253-858-4515 to obtain the Vet Code. SmartPak offers a variety of over the counter products and recommended prescriptions that can be delivered directly to your home or boarding facility.

### CHANGES IN BILLING

Payment is due at the time of services.

We no longer offer billing. We gladly accept cash, visa or mastercard, so please consider having us keep your card on file. Please call our office with your email address so information and reminders can be sent electronically. If a statement is needed a \$5.00 billing fee will be added per statement sent.

### NATIONAL PET DENTAL MONTH

*Good dental health is essential to your horses health, so once again we will honor National Pet Dental Month by offering 20% off routine dental exams and teeth floats. Latest studies show oral exams should start as early as 1 year of age. Annual exam of the teeth is recommended for horses up to 20 years of age, then twice yearly for over 20. Untreated teeth problems can cause anything from digestive problems with the inability to process food and maintain good weight to pain when using a bit. Working together with Equine Dental Specialist Mary Delorey, DVM, our goal is to provide our clients with optimum dental care for their horses. Please call today to schedule an appointment to take advantage of this offer.*



### COLD WEATHER TIPS!



Researchers estimate the average 1,100 pound horse has a water intake of about 6.6 gallons per day. This intake can vary from one day to the next depending on how much dry matter is consumed, the amount of salt, potassium or protein in the diet, and the temperature of the outside environment. Cold weather alone can decrease water intake as much as 6 - 14%. To help prevent decreased water intake and its possible complication of impaction colic, it is beneficial in cold weather to offer water that is warmed just enough to take the chill off. Optimum water temperature for maximum palatability is 45 - 65 degrees F. Please consider purchasing water heaters for tanks or the heated buckets now available.

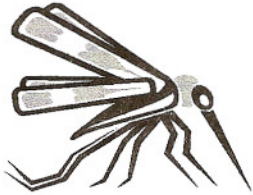


## **KEEP YOUR HORSES VACCINATED!**



### **"Prevention Is Cheaper Than Cures"**

**This statement is certainly true when it comes to the subject of vaccinating your horse. Vaccines today are far superior than they were in the past. Peninsula Equine Services uses the highest quality vaccines, resulting in a very low number of adverse reactions. Vaccinating your horse the recommended twice a year is the easiest, cheapest, and the most effective tool we have for the prevention of many illnesses or diseases. Regardless if your horse is alone or in a stable/herd environment, traveling or a homebody, illnesses in horses are readily transmitted by mosquitoes, flies, airborne particles, community water supplies and even clothing. So protect your horse and VACCINATE. No vaccines prevent 100% of diseases but all help in preventing the severity of disease if exposed. If you have any questions about the type of vaccines we carry and recommend please call 253-858-4515 / 360-876-1582**



### **WEST NILE UPDATE**

**2007 was surprisingly slow for West Nile virus in Washington. Considering**

**the activity we saw in 2006 and that of other states in our region (Idaho = 16 horse / 14 birds; Oregon = 20 horses / 63 birds).**

**Intensive monitoring in 2007 found 8 horses and 1 dead bird that tested positive for WNV. All 2007 cases were in Yakima County and this year we even saw our first case confirmed in a dog. The mild activity of West Nile in the Northwest shows how difficult it is to predict the occurrence of the disease. That is why we here at Peninsula Equine Services are so insistent on vaccination for WNV and other diseases. We feel it is through years of consistent and persistent education and prevention that WNV has not become the devastating disease it could be in WA.**

### **FUTURE DETOURS**

**The Department of Transportation has informed us that they will be closing our intersection of Olalla-Burley off of Hwy 16 beginning this July through August 2010 for the building of an overpass for Hwy 16. Many of you already know the back roads to the clinic, but we will be posting directions on our website for those of you who don't or those who just want a refresher. We apologize for this inconvenience, but we all know it is for the best. Short term (or medium term) pain, long term gain.**

**Just a reminder - there is no fee for hauling in. Keep checking the website for updates.**

**PENINSULAEQUINE.COM**

## MacKenzie Moments

### MacKenzie age 9 going on 19

Now in 3rd grade at Sidney Glen Elementary School in Port Orchard, she has developed a strong interest in archeology and mysteries. Mummies and Egyptian culture fill her head with grand adventures. She continues to compose her own novels in these areas which her teachers and family savor on a daily basis.

I only hope her obsession with pulling her baby teeth continues to fuel my hopes of MacKenzie Page, Orthodontist extraordinaire.



The gifts of an I-pod and a roll-up keyboard continue to encourage MacKenzie's love of music and vocals. Hanna Montana and Carrie Underwood look out, she's on your tails.

Her strong voice and personality came in handy with a speaking part in this years school production of "The True Tale of Cinderella" performed by the members of the Sidney Glen student body. Nearly selling out 2 performances at the South Kitsap High School auditorium is very impressive for an elementary production. The school play director has already asked for MacKenzie to try out for next years production of "Frankenstein".

Lord knows she is tall enough for the starring role.

MacKenzie's final year as a Pee Wee in the Northwest Junior Rodeo Association was very successful. Between 28yr old "Little Joe" and 20yr old "Dottie", she ended up 2nd in the All-around, 2nd in Barrels, 2nd in Poles, 2nd in Goats and 3rd in Dummy Roping. Coming home with an armful of prizes and 2 buckles was very rewarding for her year of hard work and traveling. These 2 horses are a true testament to Legend, Adequan and Cosequin, helping to prove age is not a factor; love and heart are.

This year she moves up to Junior (9-13 yrs) category and is beginning to ride my horse, "Trigger." He is much bigger and stronger which will take some adjustment, but the two of them seem to be getting along just great.

We're looking forward to the year ahead.





## CHIROPRACTIC NEWS

As most of you know by now Peninsula Equine Services continues to grow the Chiropractic portion of its practice. Feedback has been very positive with noticeable results after just the first adjustment. Important things to remember with your Chiropractic appointments: 1) A dry horse 2) Bring all saddles used on that horse 3) At least 2 days off of work post treatment 4) Be sure to schedule a follow-up appointment for 10-14 days.

### GOOD NEWS MOUNTING UP

A new study conducted at Michigan State University shows that mounting your horse from the ground causes a dramatic increase in pressure on the right side of the withers thus pulling the horses entire body to the left. This action requires the horse to lean asymmetrically in an attempt to keep its balance. Not only does this motion lead to uneven pressure under the saddle, but can also cause asymmetric muscle development. This study concludes that mounting from a mounting block helps, but the ideal way to mount is getting a leg up or from a higher platform.

### GUARDING AGAINST GIRTH GALLS

*Girth galls are one of the most painful tack induced injuries of the horse.*

*Raw and weeping sores in the armpit area of the horse occur from the front edge of the cinch or girth, primarily when the saddle is too far forward. Several factors can also be the cause; the saddle fit, the cinch or girth type, and the horses conformation to mention a few.*

*Make sure to position your saddle so that it is not too far forward on your horses back and/or consider the possibility of a new cinch or girth. Contoured girths shaped to avoid the armpit area as well as string girths are good choices for horses prone to this problem.*

*You may also choose to add a sheepskin cover to any girth.*

*In addition to making sure your saddle is not too far forward, pulling your horses front legs forward between periods of girth tightening will help smooth the skin in that area and help prevent galls.*

*Young horses and weekend warriors are most susceptible.*

*If a gall does happen, immediate care of cleaning the area and covering it with an antiseptic ointment is key.*

*Avoid using any type of girth or cinch until the skin area heals. Ride bareback or not at all.*

*Remember: Saddle fit and its correct positioning are all part of the Chiropractic Exam at Peninsula Equine.*

**253-858-4515 / 360-876-1582**

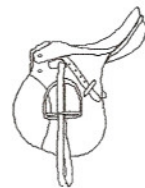


### BABY NEWS

*A huge Congratulations is in order for Dr. Renee Meronek-Tucker.*

*The birth of Renee and Rob's first child is due in April.*

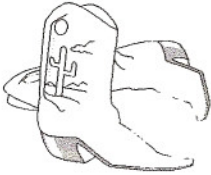
*Best wishes to Renee, Rob and the newsest Tucker.*



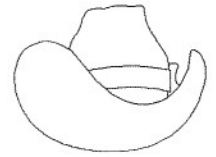
# LOCAL EVENTS

## **Kiwi Peninsula Arena Action**

Formerly know as B-F Arena; Kiwi Fencing Company and the Bryant's have opened the arena up to horse events again.



## FOR THE WESTERN WORLD



### Wednesday Night Barrel Racing Series

Dates: Feb 13th & 27th, March 12th & 26th & April 9th.

4-D Format with 1/2 second splits

Open and Pee Wee (10 and under as of 1/1/08) Classes

Gates open at 6:30 pm, with the race starting at 7:30 pm

Contact Cindy Moore at: [red@kiwifencing.com](mailto:red@kiwifencing.com) for more info.



## FOR THE ENGLISH MINDED



Ride and Review Dressage Shows - February 16th and March 8th

Jumper Jackpot - February 23rd and March 22nd

Contact Janice Bryant at: [Janice@kiwifencing.com](mailto:Janice@kiwifencing.com) for more info.

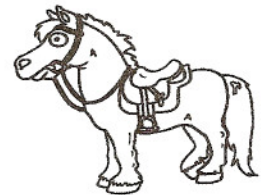
## FOR ALL HORSEMAN



Tuesday's - Barrel Practice Night - 6:30 - 9pm

Thursday's - Open Ride Night - 6:30 - 9pm

Contact the above addresses for more info.



Saddle Up!!!

## DOG AGILITY SHOW

For something fun and different come to the

"Dog Agility Show"

March 1st & 2nd.



## **WHAT A DIFFERENCE A YEAR MAKES**

As most of you know, Annie DeWalt has left the practice to pursue a career in Cosmetology.

She can still be found at Athenas Salon in Gig Harbor (253) 851 - 2883.

Good Luck, Annie -- We miss you and your great phone voice.

The office is now being run by Debbie Czyzewski, LVT. I have been in the veterinary field for almost 20 years and became a Licensed Veterinary Technician in 1995. Dr. Page pulled me out of semi-retirement to work part time running the office. The new office hours are now 9-1pm Tues-Thurs to answer the phone and dispense medications. I am off Mondays and Fridays. If

calling after hours or on my days off, please leave a message with the dates and time you would like to schedule an appointment as calls are monitored and we will contact you. I am looking forward to meeting and becoming familiar with all of our clients, but until then, please be patient with all my questions regarding your accounts.

Although I do not possess the great phone voice of Annie, and my hair is slightly gray (well maybe more than slightly), I guess

I am here for a while.

Reminder: Emergencies are limited to: **ACTIVE CLIENTS ONLY**

**Peninsula Equine Services**

**P.O. Box 130**

**Burley, WA 98322**



## **COMING OF AGE**

**Well, we decided to advance with the rest of the world and build a website. I know, I know it is hard to believe! We are truly excited about this new way of communicating with our current clients and new clients alike. We will offer information ranging from services provided to latest information regarding equine health.**

**Are goal is to have it up and running by the end of March.**

**Website: [Peninsulaequine.com](http://Peninsulaequine.com)**